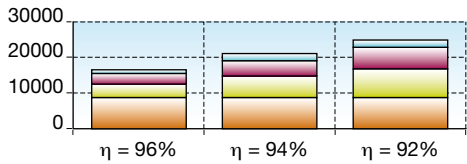


Significant cost savings (TCO)

Reduces costs and helps to save the environment

- Reduced energy loss and requirement of air conditioning systems.
- Highest efficiency performance on the market up to 96% over a wide range of uses.
- Excellent input power factor and harmonic content avoid the over rating of the supply system.
- **EBS** (Expert Battery System) manages the charging method based to increase the battery lifetime.
- Extremely compact footprint (high power density) to leave the server room to the servers.
- CO₂ emissions are reduced by 45%.
- Minimised amount of battery cabinets needed for an equivalent back-up time.

€ TCO after 1 year at 90% load - 100 kVA

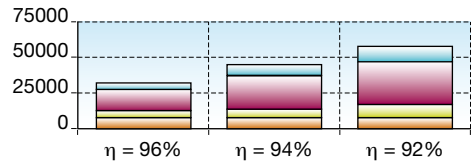


UPS initial cost Air-cond initial cost
UPS losses Air-cond consumption

Calculation based on 0,10 € / kWh - 100 kVA UPS / Cooling COP = 3.

DEFS 082 A GB

€ TCO after 5 year at 90% load - 100 kVA

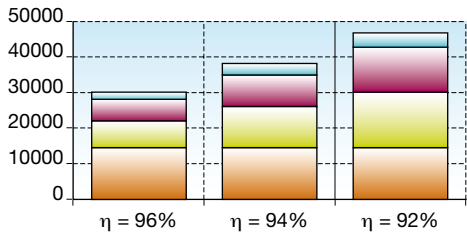


UPS initial cost Air-cond initial cost
UPS losses Air-cond consumption

Calculation based on 0,10 € / kWh - 100 kVA UPS / Cooling COP = 3.

DEFS 081 A GB

€ TCO after 1 year at 90% load - 200 kVA

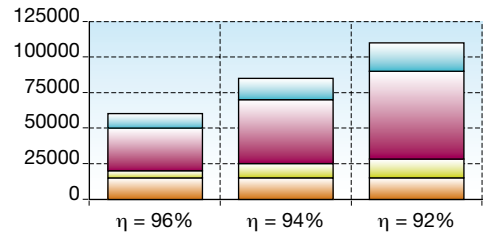


UPS initial cost Air-cond initial cost
UPS losses Air-cond consumption

Calculation based on 0,10 € / kWh - 200 kVA UPS / Cooling COP = 3.

DEFS 082 A GB

€ TCO after 5 year at 90% load - 200 kVA



UPS initial cost Air-cond initial cost
UPS losses Air-cond consumption

Calculation based on 0,10 € / kWh - 200 kVA UPS / Cooling COP = 3.

DEFS 076 A GB

Optimised electrical network

More high quality power for latest-generation leading IT loads

- The **Green Power** UPS systems are designed to supply the latest-generation leading servers.
- The 0.9 rated output leading to lagging power factor responds perfectly to computer system high power factor load requirements.
- High active power, and without derating up to a power factor value of 0.9 for the latest generation of servers.

“Clean” rectifier, for a reduced upstream installation and reduced input current

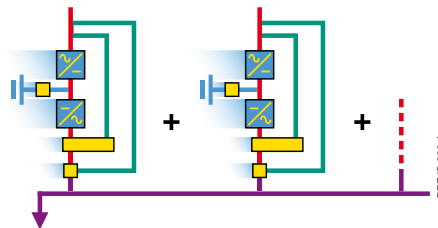
Upstream constant power factor of 0.99 and extremely low harmonic distortion (< 2.5%), optimises the upstream infrastructure:

- optimal gen-set and transformer,
- minimum upstream protection and cable sizing,
- the overall installation power is noticeably improved in terms of capacity and quality.

UPS and system architectures

To meet the most demanding availability requirements and the need for a flexible and upgradable installation, **DELPHYS Green Power** with different system architectures.

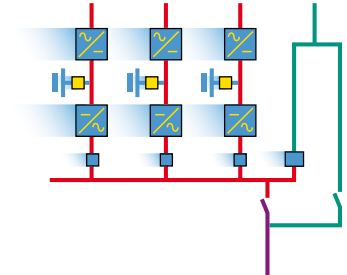
- **DELPHYS Green Power modular, parallel development without constraints**



DEFYS 003 A

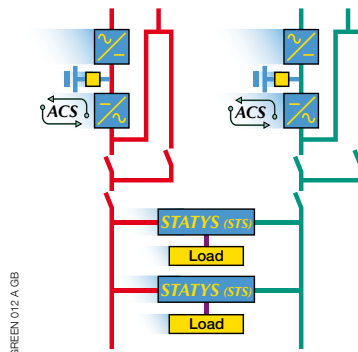
DEFYS 004 A

- **DELPHYS Green Power centralised bypass, parallel progressive development**



- **Double bus architecture,**

for very high availability (TIER III or TIER IV classification).

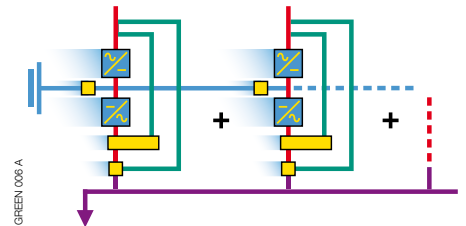


GREEN 012 A GB

ACS: Automatic Cross Synchronisation
STS: Static Transfer System

- **Shared battery**

optimisation of battery size for parallel systems.



GREEN 005 A

Available with distributed batteries, **DELPHYS Green Power** 160-400 kVA makes it possible to optimise battery size thanks to shared battery operation. This reduces the overall system footprint, weight of required batteries, the battery monitoring system, the amount of wiring needed and amount of lead.